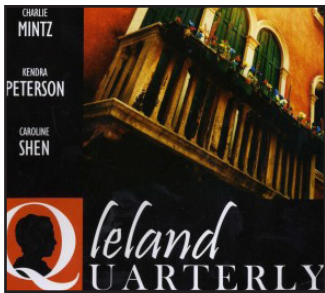




HEADLINES



Santorum Aborts Campaign



Leland Quarterly Fails to Get Special Fees; Just Not Funny Anymore

Match the Sorority With Their Breakfast Food

Draw a line connecting each sorority with their breakfast of choice!

KAΘ



KKΓ



AEΦ



αKΔΦ



ΠΒΦ



XΩ

ΔΔΔ



RES ED UNVEILS ENTREPRENEURSHIP-FREE DORM

This past week, Stanford dean of Residential Education Deborah Golder announced that, starting next fall, Naranja will be the testing grounds for a new entrepreneurship-free housing option.

“We’ve heard the feedback from students around campus, and we know that there are those who just aren’t comfortable with the amount of entrepreneurship that seems to occur in almost every dorm,” said Golder.

Plans are still in the initial stages, but so far the guidelines prohibit sticky notes, rapid prototyping, the dorm mailing list, words ending in “ly,” and swivel chairs.



There will be no sticky notes in Naranja next year.

Golder is still worried: “This may not be enough, and since this is the first time we are doing it, we have lots of questions to answer. What

do we do if the RA walks in on a student ideating?”

We spoke to several students who echoed the need for this type of housing. “My roommate last year was a little too into entrepreneurship,” said Cole Grinly ‘13. “He kept asking me to invest; first a dollar here, and then more each weekend. One day he was sent to StartX, and he never came back.”

“We want to create a safe space where students can live without white boards, beta testing, and constant iteration,” said Golder. “Think of it as an AirBnB for fuzzies.” (Kceshin)

How To Spot a Sorority Girl

Here at the Flipside, we pride ourselves on knowing the ins and outs of sorority life. If you’ve been walking around campus and going to class wondering if some girl is in a sorority, we have come up with a comprehensive survey called “How to tell if someone is a sorority girl.” If you can answer “yes” to at least 4 of these questions about the girl, then she is definitely a sorority girl!

How to tell if someone is a sorority girl:

1. Is she wearing a sorority t-shirt? (Extra point if it’s a bro-tank)
2. Does she have that distinctive sorority smell? (perfume, apples, hairspray, tequila)
3. Is she making gangster signs with her hands?
4. Is it that time of the month?
5. Is she wearing a black Northface sweater or Uggs?
6. Is she in a sorority?
7. If you’re looking at a photograph of them, are they in the middle of the photo?
8. Is she reading Twilight at Coupa Café?
9. Is she in a sorority? (see number 6)
10. Is she wearing body paint? Or glitter everywhere? (Collision)

ASSU Election Proceeds Smoothly, Without Drama



Associated Students of Stanford University

Stanford sources are pleased to report that last week’s election proceeded unusually smoothly and without the melodrama and fuss that typically accompanies ASSU elections. “Nothing really happening here,” said ASSU Elections Commissioner Adam Adler, as he made the final move in a game of computer solitaire.

“Normally, elections are filled with over-the-top rhetoric, controversies, and candidates demanding my vote, but this year, it’s as if people didn’t even know we had an election,” said Brad Donovan ’12. “Where were the personal attacks and the

dirty campaigns, the pleas for dignity, and the demand for respect? It felt like the candidates were just phoning it in.”

“Nothing really happening here”

ASSU President-Elect Robbie Zimbhoff apologized for the uneventful elections cycle. “If I could do the election over again, I would definitely make things more interesting—we could even light something on fire or cheat on our significant others.” (Adler, Foucart)

ENTER THE FLIPSIDE PUZZLE CHALLENGE!

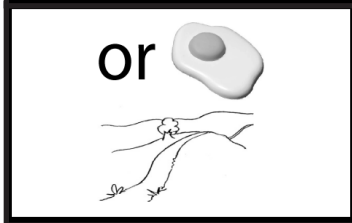
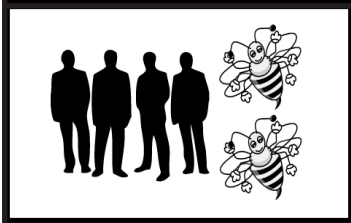
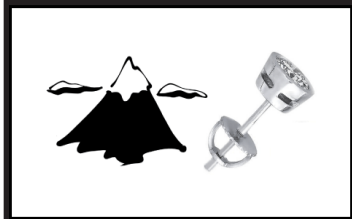
Go to stanfordflipside.com to submit your answers to the puzzle challenge. The first solver will win a Flipside shot glass! Congratulations to last week's winner: Kelly Gregg

At the end of spring quarter, one person will randomly be selected to win a \$50 Amazon gift card, so submit online!

QUOTE: "Did you get Druthi's drunk text?"

REBUS PUZZLES

Can you guess the common word or phrase portrayed below?



last week's answers: PICKPOCKET, INCUBATOR, RAISIN BREAD, LEGENDARY

NUMBERS

6

The number of students found dead after the CIA recruitment session protest last week. There appears to be almost no connection between the victims other than their mutual involvement in last week's protests. In an odd turn of events, the students all died of gunshot wounds or drone bombings. SU Alerts have circulated advising students to lock their doors at night and avoid anyone who might have access to a General Atomics M-Q1 Predator aircraft.

stanfordflipside.com

CRYPTOGRAM CHALLENGE

This is a simple substitution code. Each letter is replaced by a different letter. Try to decode the message or quote below. HINT H = A

N ZLIQ XLRQK. GDS NS NA HA HM HKSNAS SPHS N ZLIQ NS. N ZLIQ NS HA H UDANT-NHM ZLIQA PNA INLZNM, SL FKHR LDS NSA ALDMFA HMF TPLKFA HMF PHKULMNQA. -MHXLZQLM GLMHXHKSQ

LAST WEEK'S ANSWER: THERE ARE A HELL OF A LOT OF JOBS THAT ARE SCARIER THAN LIVE COMEDY. LIKE STANDING IN THE OPERATING ROOM WHEN A GUY'S HEART STOPS, AND YOU'RE THE ONE WHO HAS TO FIX IT! -JON STEWART

FLIPSIDE TSHIRT

Each week we will feature the design of a limited edition t-shirt for \$10. Flipside Logo on the back. To order a shirt, email flipside@stanford.edu with what size you want. Due to tech difficulties, you can order shirts, but they are a bit delayed.



The Stanford Flipside is a weekly satirical newsletter. Our stories are fictional, but we make jokes about real issues. Our goal is not to offend you, but to make you laugh and to reframe our world to point out the absurdities. Anyone is free to join the Flipside, and we would love to have you! We meet Tuesdays at 4pm to brainstorm. Contact flipside@stanford.edu for more information.

JUMBLE

Unscramble these four ordinary jumbles, and use the letters in circles to answer the final question.

T F H L I
○ ○ □ □ □

U L F F B
○ □ □ ○ □

O U T E D X
□ □ ○ ○ □ □

S S M O O C
○ ○ □ □ ○ □

○ ○ ○ □ ○ ○ ○ ○ ○ ○



LAST WEEK'S ANSWERS: SALAD SCARF PELLET AGENCY the game in which concentrated beams of light chase one another LASER TAG

Editorial Board: Jeremy Keeshin, Zach Galant, Adam Adler, Laney Kuenzel, Eric Karpas, Roxy Carbonell, Conor Doherty, Kyle Hoffer